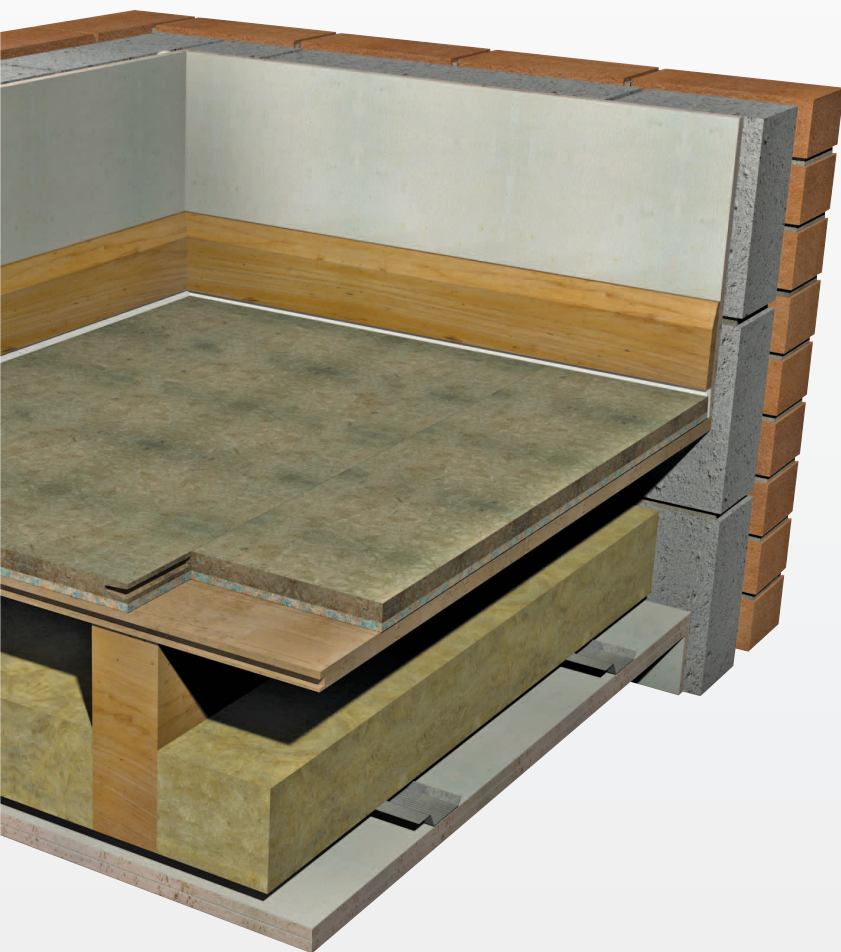


FloorDeck 30 system FloorDeck 26 system FloorDeck 17 system



OVERLAY PLATFORM SYSTEMS DIRECT TO FLOORBOARDS

- New build
- Refurbishment
- Conversions



Taking the *mystery* out of Acoustics

One of the SRU Insulation standard systems range

SRU acoustic insulating boards

DESCRIPTION

- SRU Deck 17, 26 and 30 systems are designed to reduce transmission through timber floors in situations where finished floor height is critical.
- SRU Deck 17 boards consist of a layer of 8mm reconstituted ACF (Acoustic Chip Foam) bonded to 9mm moisture resistant medium-density fibreboard; SRU Deck 26 and 30 boards consist of a layer of 8mm reconstituted ACF bonded to 18mm or 22mm V313 P5 moisture resistant chipboard.
- When installed as part of a complete sound reduction system, it enables a timber floor to meet the sound transmission regulations of Approved Document E 2003 and subsequent amendments in 2004, 2010, 2013 & 2015.

APPLICATIONS

- To be used over existing floorboards for conversions, refurbishments or new build with a new resilient bar ceiling.



Product data

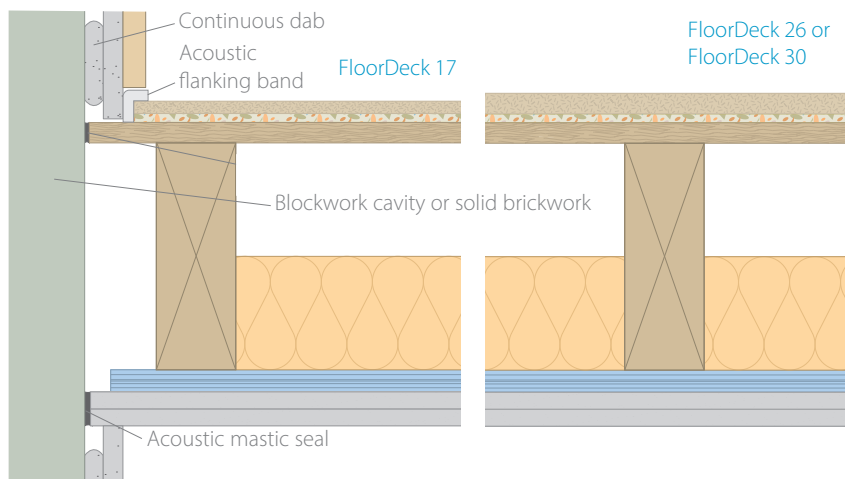
Overall sizes:	FloorDeck 17: 1200mm x 600mm x 17mm FloorDeck 26: 2400mm x 600mm x 26mm FloorDeck 30: 2400mm x 600mm x 30mm
Resilient layer thickness:	8mm
Resilient layer:	Reconstituted ACF (Acoustic Chip Foam)
Resilient layer fire test:	Tested to BS 5852-2:1982
Weights:	FloorDeck 17: 5.1kg per sheet FloorDeck 26: 18.8kg per sheet FloorDeck 30: 21.9kg per sheet

Typical performance expectations

(On the party floors as illustrated below with a joist depth not less than 200mm)

Treated floor with:	Airborne		Impact	
	$R_w + C_{tr}$	$D_{nT,w} + C_{tr}$	L'_{nw}	$L'_{nT,w}$
FloorDeck 30	55dB	50dB	45dB	50dB
FloorDeck 26	55dB	49dB	44dB	49dB
FloorDeck 17	54dB	48dB	43dB	48dB

Site results (in red) for Building Control approval. Laboratory results (in blue) for comparison.*



- FloorDeck 17, 26 or 30 systems on existing timber floor (subject to condition) or a new 18mm chipboard deck.
- 200mm x 50mm timber joists @ max. 450mm centres.
- 100mm 45kg/m³ insulation between joists.
- 20kg/m² double boarded ceiling on resilient bars @400mm centres perpendicular to joist direction.
- Acoustic flanking band reduces impact vibration leaking via structural walls and assists in reducing airborne sound paths.

OTHER PRODUCTS IN THE MONODECK RANGE

- **FloorDeck37:** overlay platform systems direct to joists to reduce transmission and thermally enhance traditional joisted timber floors.
- **FloorDeck26C:** overlay platform system to reduce sound transmission and impact sound transmission through concrete floors.

Every effort has been taken in the preparation of this sheet to ensure the accuracy of representations contained herein. Recommendations as to the use of materials, construction details and methods of installation are given in good faith and relate to typical situations. However, every site has different characteristics and reliance should not be placed upon the foregoing recommendations. Advice can be given as to specific applications of the products, upon request to isomass building products.

*Laboratory results are predicted to enable a comparison

www.sruinsulation.co.uk

SPECIFICATION

The acoustic floor shall be:

- SRU FloorDeck 17, 26 or 30.
SRU Insulation Ltd.
2-4 Rosehill Court Parade,
St Helier Avenue,
London, SM4 6JS
installed in accordance with
manufacturer's instructions /
recommendations.

INSTALLATION

- Apply SRU Flanking Bands on the edges of the Floordeck boards just before they are pushed against the perimeter walls to isolate the board from the wall (as shown in the diagrams).
- Lay the Floordeck over existing floor boards in broken bond pattern, applying adhesive to all tongue and grooved panel joints.
- Install skirting over exposed flanking band and trim off any excess.
- Full installation instructions are available for download and must be used in conjunction when laying this floor system.

Please ask SRU Insulation for guidance when considering the weight of any new blocks which will be incorporated in a wall directly surrounding a timber separating floor.



FloorDeck 17



FloorDeck 30